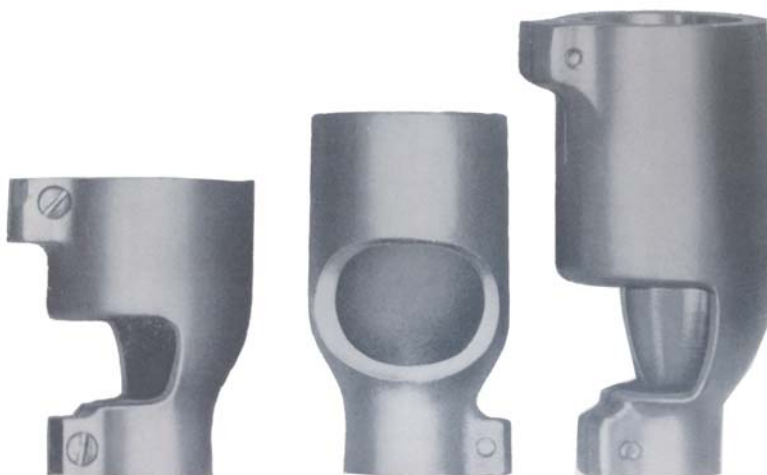




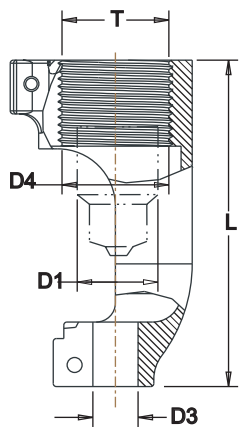
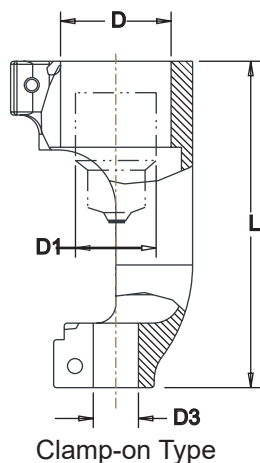
Drill Guide Mounting Adapters



ZT5

ZT5B

ZT5D



TYPE	PART NO.	D	D1	D3	D4	T	MAXIMUM CHUCK MODEL	L
Clamp-On Type	ZT5-1	1-1/2"	1-3/16"	11/16"	--	--	1B	2-3/4"
	ZT5-2	1-5/8"	1-3/16"	11/16"	--	--	1B	2-3/4"
	ZT5D-1	1-1/2"	1-7/16"	11/16"	--	--	30B	4-1/4"
	ZT5D-2	1-9/16"	1-7/16"	11/16"	--	--	30B	4-1/4"
	ZT5D-3	1-5/8"	1-7/16"	11/16"	--	--	30B	4-1/4"
	ZT5D-4	1-11/16"	1-7/16"	11/16"	--	--	30B	4-1/4"
Threaded Type	ZT5B-1	--	1-3/16"	11/16"	1-1/4"	1-3/8-20 LH	1B	2-3/4"
	ZT5B-2	--	1-3/16"	11/16"	1-3/8"	1-1/2-20 LH	1B	2-3/4"
	ZT5B-4	--	1-3/16"	11/16"	1-1/4"	1-7/16-20 RH	30B	4-1/4"

Adapters with other D, D4, or T specifications made to order.
The above adapters will also accommodate our Flat Offset Angle Drill.